

SCENAR Therapy As An Effective Relief During the Seasonal Allergies.

Roughly 40% of Americans suffer from seasonal allergies. Seasonal allergies is atopic disease caused by plant allergens (pollen, etc.); a type of inflammation in the nose which occurs when the immune system overreacts to allergens in the air. Signs and symptoms include acute conjunctivitis (pain in the eyes, red, itchy, and watery eyes, "feeling of sand", lacrimation, photophobia and swelling around the eyes), acute rhinitis (runny (the fluid from the nose is usually clear) or stuffy nose, sneezing, nasal congestion), acute otitis is possible (feeling of "stuffing" of the ears, partial or complete hearing loss), and also symptoms similar to acute respiratory infections are possible (a feeling of perspiration and sore throat, cough, runny nose, pain in the eyes, fever).

Symptom onset is often within minutes following allergen exposure and can affect sleep, and the ability to work or study. Some people may develop symptoms only during specific times of the year, often as a result of pollen exposure.

On top of that often forest fires in CA, (sometimes in OR and WA) worsen the situation. While not everyone has the same sensitivity to smoke caused by fire, the added burden of airborne particles, sometimes combined with the Juniper pollen, are triggering allergy symptoms in many who have never before reported seasonal allergies.

So, millions of Americans found themselves sneezing and sniffing, blowing their noses and dabbing at watery eyes. Allergies are so common, that can be so annoying and so unpredictable which victims are desperately seeking relief wherever they believe they can find it. In fact, 1 in 4 allergy sufferers have been quick to turn to alternative medicine.

But the question is: which treatment out of the numerous options is the most effective?

Without the doubt SCENAR therapy is one of the most effective allergy relief treatments. Weed-pollen sufferers can benefit from non-invasive SCENAR treatment since they don't put anything into their bodies.

Anti-allergy SCENAR therapy:

- is non-drowsy that is often associated with OTC allergy medicine;
- works well at relieving sneezing, congestion and itchy eyes;
- reduces inflammation and mucus production in the eyes, sinuses, nose and throat.

Therapy:

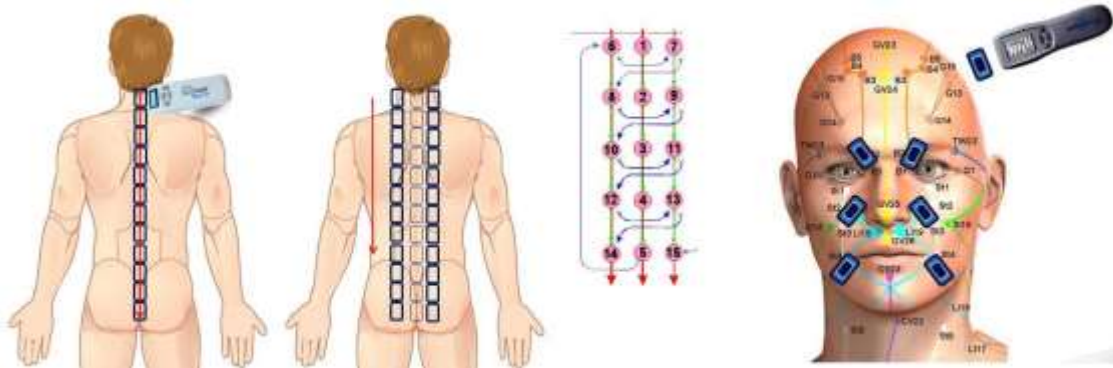
1. At the onset of the disease, it is recommended to perform the treatment in the general zones (SCENAR TECHNIQUE "**3 Pathways**", "**6 Points on the Face**" and the projection of the adrenal glands).

Device settings:

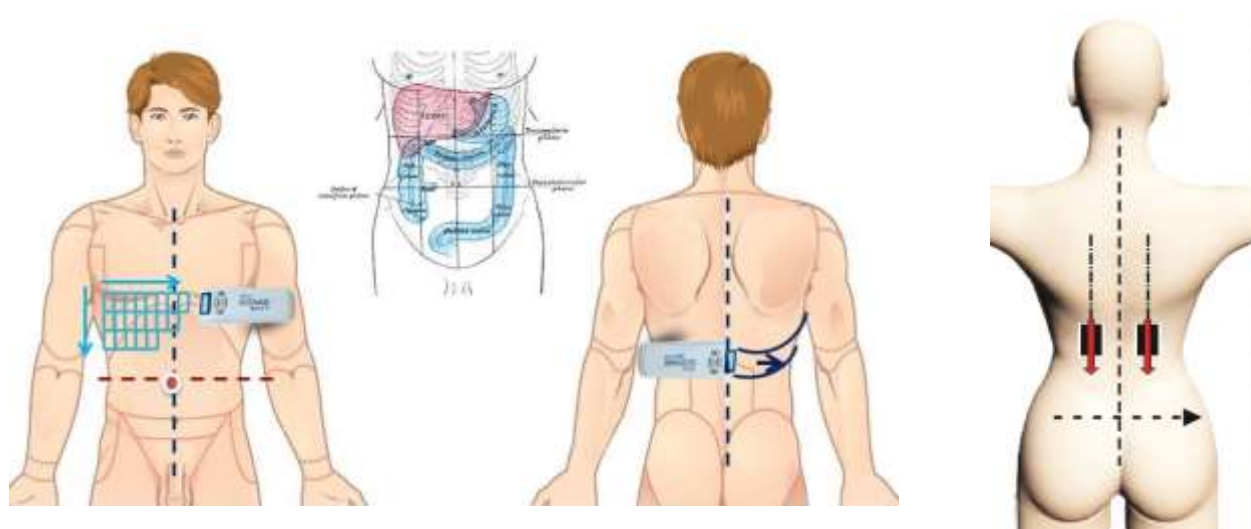
- easy stage – IDM (Individually Dosed Mode), F = 50-90 Hz;
- more severe stage - subjective mode, F = 50-90 Hz, Dmpf = 3;
- the adrenal glands are best treated in variable Frequency mode or in intensive care mode Gap = 20-10.

2 In case of significant symptoms of general intoxication, it is necessary to additionally treat the projection of the liver and kidneys (detoxification technique).

Treatment: treat the zones multiple times, gradually increasing the Frequency from 50 to 100 Hz, Dmpf = 2, or in Intensive therapy mode Int-3-5, gradually decreasing Gap from 40 to 10.



SCENAR TECHNIQUE "3 Pathways" and "6 Points On the Face"



SCENAR TECHNIQUE: Projection of the liver and Projection of adrenal glands.

3 To enhance the effectiveness of the above treatment you can use a special nasal electrode OtoRin as a direct action on the nasal mucosa.

SCENAR electrode irrigates the sinus cavities by irritating the insides, shrinks the sinus walls, thus relieves the congestion. Mucus coming through the nasal passages can also flush out the tiny particles that trigger allergies.



Attach the electrode to SCENAR device. The cotton tip of the electrode (you will need a plastic Qtip cut to the length that equals the length of a metal part of the electrode to use as its disposable top), soaked in saline or miramistin, is gently inserted into the nasal cavity.

Device settings: alternate FM or SW4, E – low to comfortable.

The special nasal electrode OtoRin by Dr.Konnik MD.

Treatment time 10-15 minutes. In an acute condition - several times a day, as a preventative method in a chronic condition – once a day.

During the procedure, there is an abundant secretion of mucus, due to which the release of inflammation products occurs. It is necessary to provide the patient with a box of tissues.

Using SCENAR electrode on a regular basis could also prevent colds, or lessen a cold's length and symptoms.

Patients with chronic nasal and sinus problems including seasonal allergies who perform SCENAR self-treatment show better results compared to the traditional methods.